



GIG
CYMRU
NHS
WALES

Addysg a Gwella Iechyd
Cymru (AaGIC)
Health Education and
Improvement Wales (HEIW)

MARS Enhancements to the Medical Appraisal and Revalidation System aligned with Good Medical Practice (GMP)

Appraiser

We've made several updates to MARS to align with the Good Medical Practice 2024 guidelines and enhance the quality and consistency of appraisals for doctors in Wales. These changes are designed to ensure that all appraisals meet the necessary standards.



MARS Update - Enhancements to the Medical Appraisal and Revalidation System aligned with Good Medical Practice (GMP)

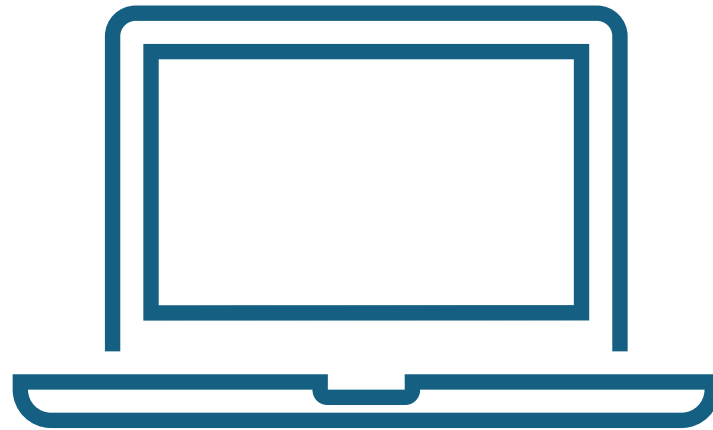
As of January 30, 2024, the updated version of Good Medical Practice (GMP) has come into effect for doctors. The domains on MARS will be updated to reflect these changes on **18/03/2025**. Below is a comparison of the new and previous domains:

New Domains	Previous Domains
<ol style="list-style-type: none">1. Knowledge skills and development2. Patients' partnership and communication3. Colleagues culture and safety4. Trust and professionalism	<ol style="list-style-type: none">1. Knowledge skills and performance2. Safety and quality3. Communication. Partnership and teamwork4. Maintaining trust <p>Teaching, research, leadership, and innovation</p> <p>Insights and Reflections</p> <p>Probity & Complaints</p>



Enhancements to the Medical Appraisal and Revalidation System aligned with Good Medical Practice (GMP)

How Will This Affect My Current Appraisals?



Appraisals booked before **18/03/2025**:

- These appraisals won't be impacted by the domain changes.
- You can continue as usual and commit the doctor's summary.
- If you need to edit an entry, **do not change the domain**—just save the entry as usual.
- If you merge or add selected information you will need to manually update the domain to the new GMP domains.
- Agreed PDPs – Dependant on when you committed the summary the PDPs may be under the new GMP domains. The system should allow you to commit as usual.

Appraisals Booked on or After **18/03/2025**:

If you have added the doctor's information to the summary before **18/03/2025**:

- You will need to update the doctor's entries (including PDPs) where the old domains are shown to the new GMP domains.

If you transferred appraisal information onto an appraisal summary **before** the change date, but your appraisal meeting was **delayed/moved** until after the change date, you may notice the following:

- The domains in the appraisal summary will now be **highlighted**, indicating changes.

⚠ Domain 2 - Safety and Quality - *This is an expired domain, please edit the appraisal information and select a new domain.*

- There **may be a mix of old and new domains** in your summary.
- The system **will not block** the use of the old domains, but you should review the highlighted sections to ensure alignment with the updated format.

If you haven't added the doctor's information to the summary before 18/03/2025:

- When you move all the information, the old Domains 1-4 will automatically be updated to the new GMP domains.

Any entries that were under the following domains will need to update to the new GMP domains:

- **Insights and Reflections**
- **Teaching, Research, Leadership, and Innovation**
- **Probity & Complaints**

- If you merge or add selected information you will need to manually update the domain to the new GMP domains.

A notification will prompt you to change the domain to the new GMP domains, as shown in the screenshot below.

To update, select the edit button and update the domain.

Please Note: The information in the entries and attached documents will not be impacted by this update.

⚠ Domain 2 - Safety and Quality - *This is an expired domain, please edit the appraisal information and select a new domain.*

Area

⚠ *This is an expired domain, please re-select.*

Domain 1 - Knowledge, Skills and Performance



Enhancements to the Medical Appraisal and Revalidation System aligned with Good Medical Practice (GMP)

Doctor's Declarations:

- If the doctor's declarations include any of the old domains, you will need to unlock the declarations. This allows the doctor to update their declarations with the new domains.
- A notification will prompt you to change the domain to the new GMP domains, as shown in the screenshot below.
- You will not be able to commit the summary without the doctor updating their declarations with the new domains.

● Domain 4 - Maintaining Trust ⚠ *This is an expired domain, please unlock the declarations*

● Domain 4 - Maintaining Trust ⚠ *This is an expired domain, please unlock the declarations*

● Domain 4 - Maintaining Trust ⚠ *This is an expired domain, please unlock the declarations*

● Domain 4 - Maintaining Trust ⚠ *This is an expired domain, please unlock the declarations*